

Project Overview

As part of our commitment to provide safe and reliable service to all our customers, Rochester Gas and Electric Corporation (RG&E) is updating the electric transmission system in our service areas. These upgrades comply with new electric transmission reliability requirements.

While making investments to meet the community's growing energy demands, we are working closely with our neighbors to ensure that all improvements are performed with minimal disruption to the environment and the communities we serve.

Project Purpose and Need

To comply with more stringent reliability standards issued by the North American Electric Reliability Corporation (NERC), RG&E plans to install a new 115 kilovolt (kV) transmission line (Line 949) between Station 48, located on Lexington Avenue in the City of Rochester, and Station 418, located in the vicinity of the Rochester Technology Park in the Town of Gates. The expansion and upgrade of Stations 48 and 418 will also be part of the project scope so they can accommodate the proposed new line.

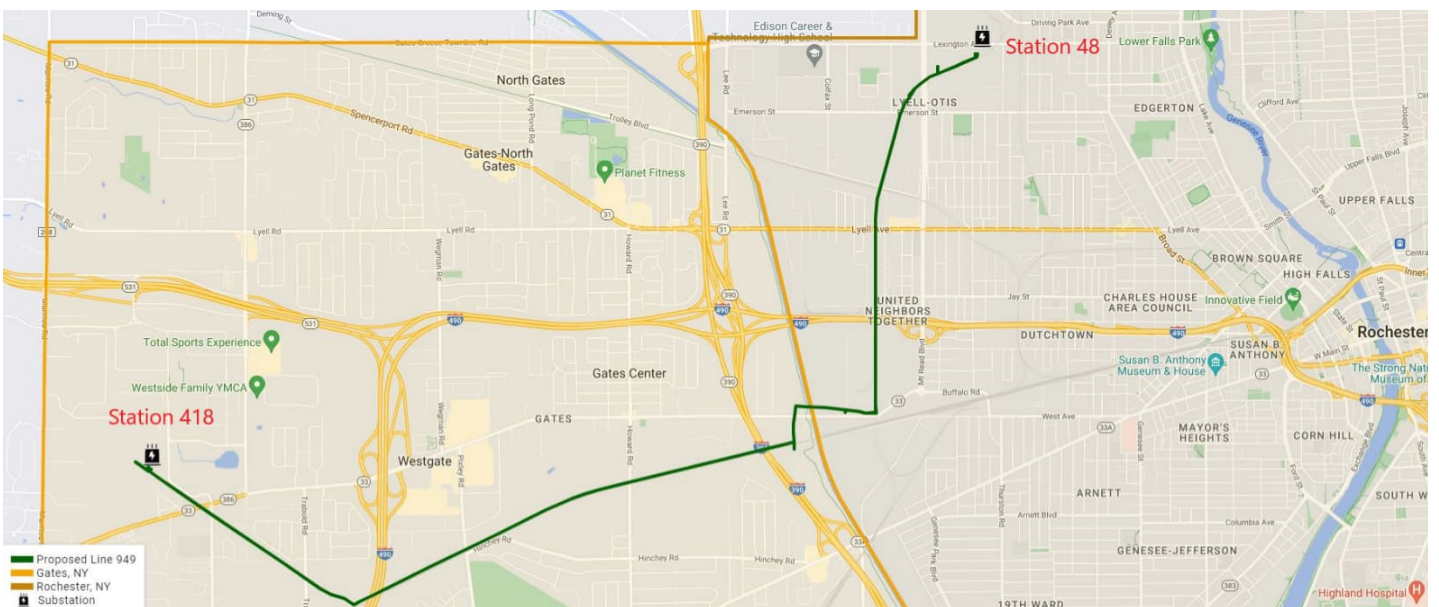
This project, known as the Rochester Transmission Project Enhancement (RTPE), will provide an additional source of power to Station 418, reinforce the bulk power supply and ensure reliable service under certain contingency scenarios.

Project Information Line: 888.379.9995

Website:
RochesterTransmissionEnhancement.com

Email:
info@RochesterTransmissionEnhancement.com

NYS Public Service Commission (PSC)
Case 20-T-0103



New Line 949 will be constructed between Station 48 in the City of Rochester and Station 418 in the Town of Gates.

Project Scope Includes

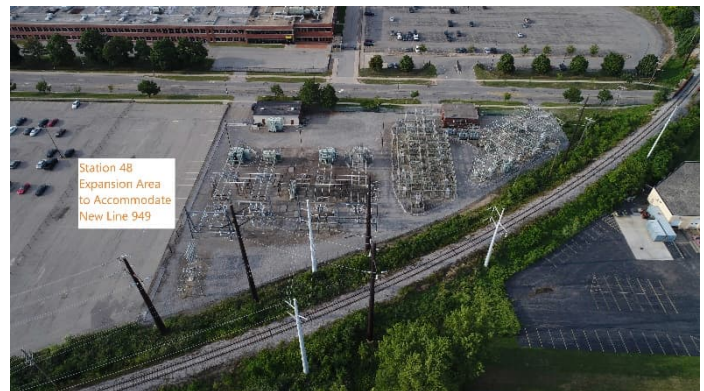
- New Line 949 total length approximately 6.7 miles located in the City of Rochester (2.5 miles) and Town of Gates (4.2 miles).
- Expansion and upgrade of Stations 48 and 418 to accommodate the receipt of Line 949.
- Minimizing land impacts by installing Line 949 along existing electric transmission line rights-of-way and replacing single-circuit poles with double-circuit poles.
- The project received an amendment to a PSC Article VII Certificate of Environmental Compatibility and Public Need, and will require PSC approval of an Environmental Management and Construction Plan (EM&CP).
- Project Outreach will be conducted via in-person and virtual meetings, project fact sheets/update mailings, and website updates.

Regional Benefits

- The project will provide a direct impact and benefit to over 65 thousand individuals who live and work in the area served by these facilities.
- The upgraded and expanded facilities will meet the growing demand for additional power in the Rochester region, and support economic growth.
- The upgrades will improve the reliability and resiliency of the entire transmission system, ensuring that the safe and reliable distribution of power is maintained.



Visual simulation of new Line 949 looking west from Hinchey Road in the Town of Gates.



Station 48 on Lexington Avenue In the City of Rochester.



Station 418 in the vicinity of the Rochester Technology Park in the Town of Gates.

Project Location	
Municipalities:	City of Rochester and Town of Gates
County Impacted:	Monroe
Permitting Required:	Federal and State (Article VII Amendment)
Estimated Timetable <i>(subject to change)</i>	
Article VII Approval:	July 21, 2023
EM&CP Filed:	Q3 2024
Construction Start:	Q2 2025